



INCITE

Quick Start Guide

Use your phone for more than just talking.

- Windows Mobile® 6.1 Professional
- Touch Screen with Vibration Feedback
- Messaging and Email
- 3 Megapixel Camera and Camcorder
- Windows Media® Player 10

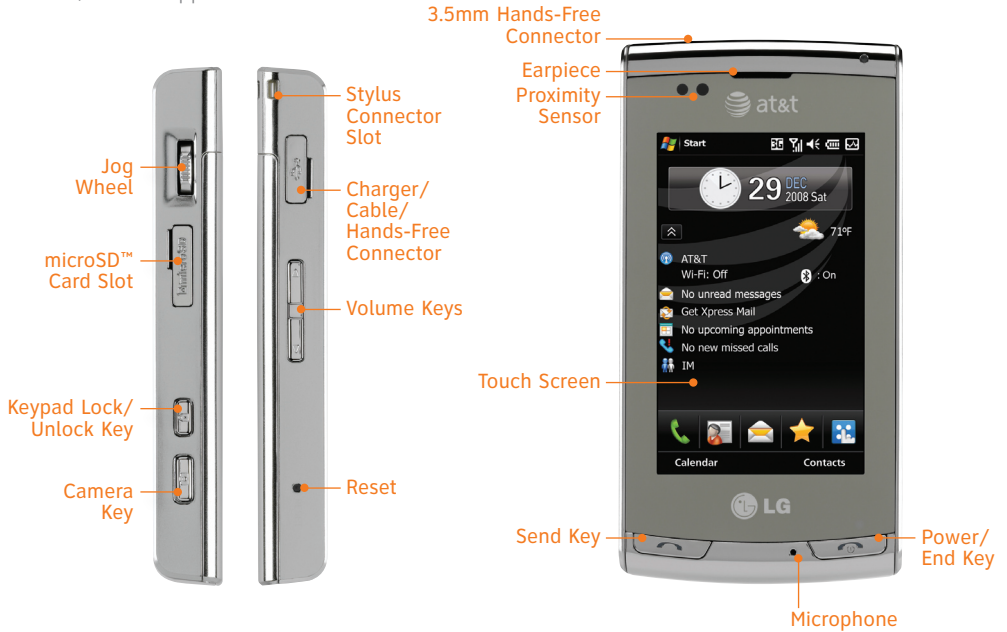
See User Manual for Spanish instructions.

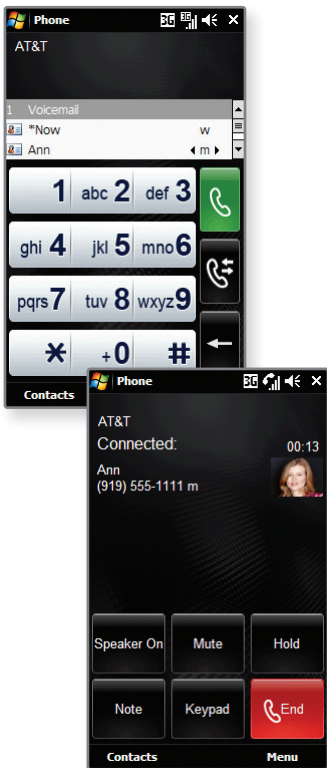
Additional charges may apply. Visit att.com for more details.
Phone features subject to change without prior notice.
Services may not be available in all markets.
All phone screens are simulated.



Getting to Know Your Smartphone

For more information, visit att.com/DeviceSupport.







Making Phone Calls

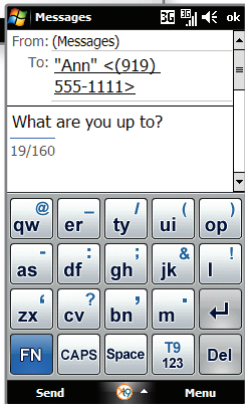
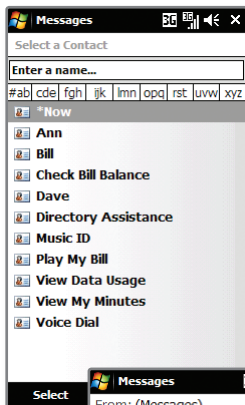
Place calls quickly and easily. With clear audio and an easy-to-use interface, this phone gives you the flexibility and reliability you need.

Dial a Phone Number

1. From home screen mode, tap **Phone** .
2. As you begin typing a phone number on the virtual keypad, the SmartDialer feature will automatically display matching entries in your address book. When you see the contact you want to call, tap his/her name and then select **Call mobile/work/home**.




Use the Address Book

1. From home screen mode, tap **Contacts** .
2. Tap the name of the contact you want to call, and then select **Call mobile/work/home**.



Text Messaging




When you need to communicate privately and quickly, use text messaging. You can text message to other wireless phones and email addresses.

1. From home screen mode, tap **Messages** .
2. In the address field, use the keypad to enter a phone number or email address. Tap / to switch between entry methods. To select someone from your address book, quickly tap **To**.
3. Tap the text field and use the virtual keypad to enter your message. To insert preset messages, tap **Menu** and then select **My Text**.
4. Tap **Send** to send your message.





Camera/Video

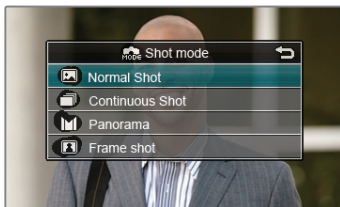
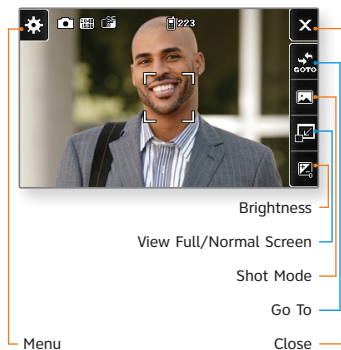
Capture everything around you in vivid detail via the 3 megapixel camera and camcorder.



Taking a Picture

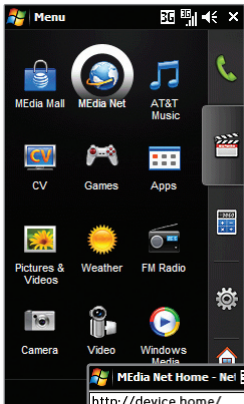
1. From home screen mode and with the phone rotated horizontally, press the  **Key**.
2. Press the  **Key** again to take the picture.
3. Tap  to send the photo to someone.

Recording a Video

1. From home screen mode and with the phone rotated horizontally, press the  **Key**.
2. Tap , and then select **Video**.
3. Press the  **Key** to start/stop recording.
4. Tap  to send the video to someone.





Note: From home screen mode, tap **Menu**  and select the **Multimedia**  subcategory. Tap **Pictures & Videos** to see your saved photos and recordings.



MEdia™ Net

With MEdia Net, you can get the information that is important to you at a glance. Your local weather, your teams' scores, and your movie theaters are all just a few taps away.

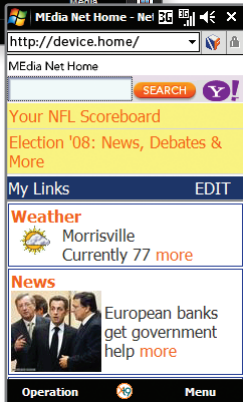
1. From home screen mode, tap **Menu**  and select the **Multimedia**  subcategory.
2. Tap **MEdia Net**.
3. Tap on a link to access additional content. To view the browser's unique carousel for bookmarks, tap **Operation** and then select **Bookmark**.

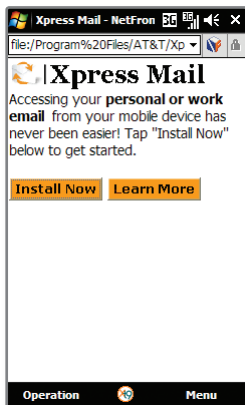
Personalize Your MEdia Net Home Page

1. From the MEdia Net home page, tap **EDIT** (next to My Links).
2. Select the content you would like added or deleted from the MEdia Net home page.

Or, Personalize Your Home Page from Your PC

1. Go to att.com/mymedianet from your PC.
2. Enter your mobile phone number and start choosing content to add to your home page.
3. Click "Update Now" to save your changes.





Personal Email Setup

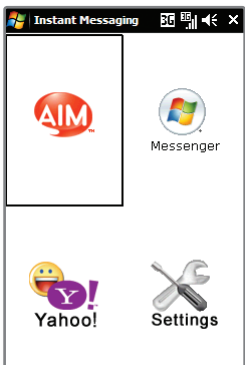
Take your email with you with mobile email. You can access up to a dozen providers, including AT&T, AOL®, Yahoo!®, and Windows Live™ email accounts.

1. From the Today screen,* tap **Get Xpress Mail**.
2. Tap **Install Now**.
3. Tap **Download Now**.
4. Select where you would like to save the file.
5. Tap **OK** to accept the license agreement.
6. Confirm your 10-digit phone number, and then tap **Next**.
7. Select **Portal or ISP**, and then tap **Next**.
8. Choose your provider, and then tap **Next** (if needed). To view additional providers, tap **More**.
9. If applicable, tap **Accept** to agree to the terms of use.
10. Use the virtual keypad to enter your user name and password, and then tap **Next**.
11. Tap **Register**.
12. Tap **OK** when registration is complete. You can then view your Xpress Mail settings.

*Customizable.





All providers may not be available on all devices. Yahoo! and the Yahoo! logo are trademarks and/or registered trademarks of Yahoo! Inc. AOL, America Online and the Triangle Logo are registered trademarks of America Online. Windows Live and the Windows logo are either registered trademarks or trademarks of Microsoft Corporation in the United States and/or other countries.



Instant Messaging

Chat in real time using your favorite instant messenger provider such as AIM®, Yahoo!, or Windows Live. Login on the go and stay connected with your wireless phone.




1. From the Today screen,* tap **IM**.
2. Select an IM community. You'll be prompted to enter your screen name/email/ID, followed by your password. Tap the needed fields and use the virtual keypad to enter the information. Tap / to switch between input methods as needed.
3. Tap **Sign In**.
4. Select a contact currently online, and then tap **Send IM**.
5. Type your message, and then tap **Send IM** again.
6. To end the conversation, tap **Menu** and then select **End Conversation**. Confirm this action by tapping **Yes**.

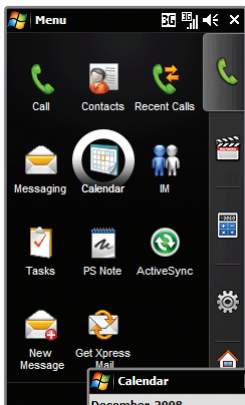
*Customizable.

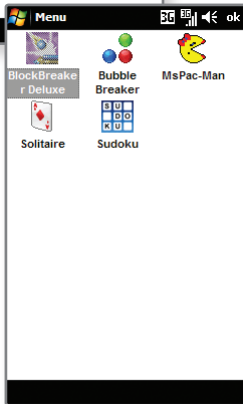
For more information, visit www.att.com/instantmessaging.

Organize Me

Stay organized and on schedule with timesaving tools including a calendar, address book, alarm clock, and tasks.

1. From home screen mode, tap **Menu** .
2. Within the **Phone**  **subcategory**, you can access handy tools such as the calendar and tasks.
3. Access the **Tools**  **subcategory** to view additional features, including the calculator, voice commands, stopwatch, notes, and more.







Downloadable Fun

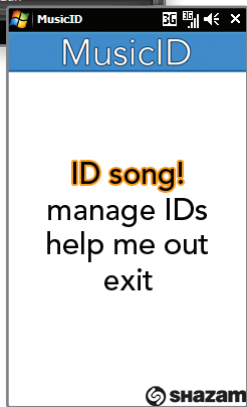
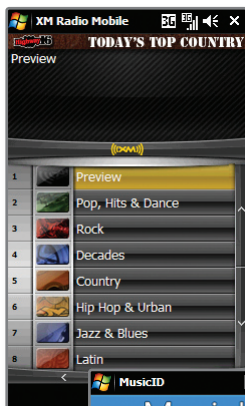
Whether you are into the latest hits or the classics, let your phone reflect your style with downloadable ringtones, Answer Tones™, and graphics. Or entertain yourself and those around you with the most popular downloadable games and applications.

Access MEdia Mall











1. From home screen mode, tap **Menu**  and then select the **Multimedia**  subcategory.
2. Tap **MEdia Mall**.
3. Tap **Shop Tones, AT&T Starter Packs, Shop Games, Shop Graphics, Shop Multimedia, Shop Applications, Shop Videos, Shop Music, or MEdia Net Home**.
4. Once connected, tap a link to browse the mall.

Access Cool Games

1. From home screen mode, tap **Menu**  and then select the **Multimedia**  subcategory.
2. Tap **Games**.



AT&T Mobile Music

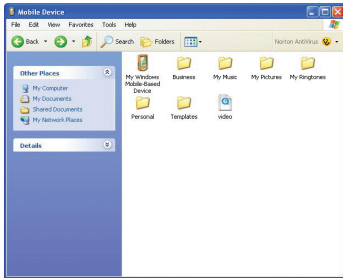
1. From home screen mode, tap **Menu**  and then select the **Multimedia**  subcategory.
2. Tap **AT&T Music**.
 -  Listen to your music with the integrated **Music Player**. Access your music by artist, album, genre, or playlist.
 -  Personalize your LG Incite with music ringtones and Answer Tones at **Shop Music**.
 -  Instantly find out the artist's name and the title of a song with **MusicID**.
 -  Visit one or more hot user communities by going to **Community**. Interact with friends and the community as well as review artist fan sites.
 -  Purchase additional fun music applications by going to **Music Apps**.
 -  Get unlimited access to commercial-free music and the latest hip-hop, R&B, rock, jazz, and country anywhere you go from **XM Radio**.
 -  Discover and enjoy new music with the music discovery service **Pandora**.
 -  Access music videos from the latest artists from AT&T, MTV, VH1, and CMT with **Music Video**.



Transfer Music

Your phone is not just for talking. You can also listen to music from your favorite artists on your phone. Transfer your favorite tunes today.

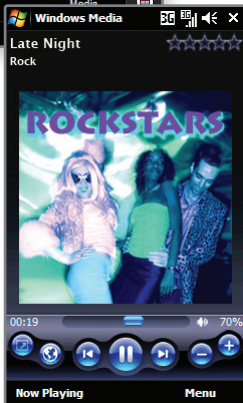
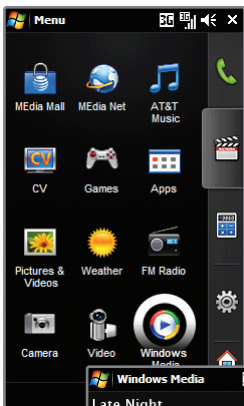
1. Make sure your music is in MP3, WMA, AAC, or AAC+/eAAC+ format.
2. Insert the microSD™ card* (gold contacts facing down) into the port on the right side of the phone.
3. Before transferring music, you'll need to download ActiveSync® software to your PC. If you have not already done this, visit www.microsoft.com/windowsmobile/en-us/help/synchronize/default.aspx for more information about this product.
4. Connect the phone to your PC using a USB data cable.*
5. Open the **Mobile Device drive** under My Computer.
6. Drag and drop songs from your computer into the **My Music folder**.



*microSD card and USB data cable sold separately; go to att.com/wireless.



Warning! Do not disconnect phone while file transfer is in progress.

ActiveSync software required. Not compatible with Mac OS® or iTunes®.

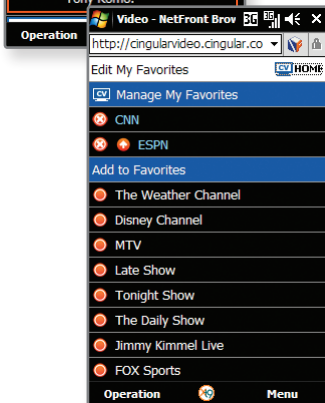
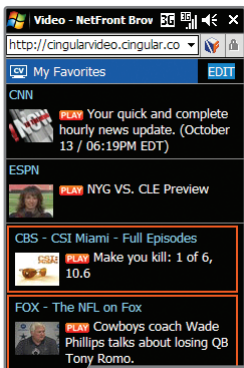


Play Music

Listen to music from your favorite artists right on your phone. To listen to music that you have transferred to your phone, follow these quick and easy steps.



1. Insert a microSD card (gold contacts facing down) into the port on the right side of your phone.
2. From home screen mode, tap **Menu**  and then select the **Multimedia**  subcategory.
3. Tap **Windows Media**.
4. Tap **Library**, and then select **Storage Card**.
5. Tap **My Music**.
6. With **All Music** highlighted, tap **Play**.
7. Press **up** or **down** on the **Side Keys** to adjust the volume.
8. Press the **Power/End Key** to access other phone functions while music is playing.

*microSD card sold separately; go to att.com/wireless.



CV

CV brings your phone to life. Watch news, sports, weather, and entertainment clips while on the go.

1. From home screen mode, tap **Menu**  and then select the **Multimedia**  subcategory.
2. Tap **CV**.
3. Once connected, tap **PLAY** beside the video clip you want to watch.



Personalize your CV Home Page

1. From the CV home page, tap **EDIT** (next to My Favorites).
2. Select the content you would like added or deleted from your CV home page.

Note: Parental Controls available. See box insert for details. Access to CV requires a MEdia™ Max plan.

GPS – Maps, Driving Directions, and More

AT&T Navigator, with GPS-enabled directions, is the fastest way to get where you are going – whether across town or across the country.

1. From home screen mode, tap **Menu**  and then select the **Tools**  subcategory.
2. Tap **AT&T GPS**.
3. If you haven't downloaded the application, you can do it right from your phone. After downloading AT&T Navigator, log in to the application.
4. Tap **Drive To**.
5. Tap **Address**.
6. Tap **Type In**, and then use the virtual keypad to enter your destination.
7. Confirm the address, and then tap **OK** to generate your route.



Accessories

Accessories for productivity, convenience, and fashion are available at att.com/wireless.



Bluetooth® Headset
(HBM-560)



Bluetooth Headset
(HBM-770)



Bluetooth Stereo Speakers
(MSB-100)



Bluetooth Solar Car Kit
(HFB-500)



Vehicle Power Charger
(CLA-305)



Carrying Case
(MBAC0001819)

microSD is a trademark of SanDisk. The Bluetooth® trademark and logos are owned by the Bluetooth SIG, Inc. and any use of such marks by LG Electronics is under license. AT&T marks contained herein are trademarks of AT&T Intellectual Property and/or AT&T affiliated companies. © 2008 AT&T Intellectual Property. All rights reserved. All other marks are proprietary to their respective owners.

MCDZ0009404